



## ***"The World's First Wall Mounted Electric BBQ."***

COMPACT & SPACE SAVING  
EASY TO KEEP CLEAN  
HIGH GRADE STAINLESS STEEL

DESIGNED IN AUSTRALIA  
MADE IN ITALY



[www.wallmountbbq.com](http://www.wallmountbbq.com)

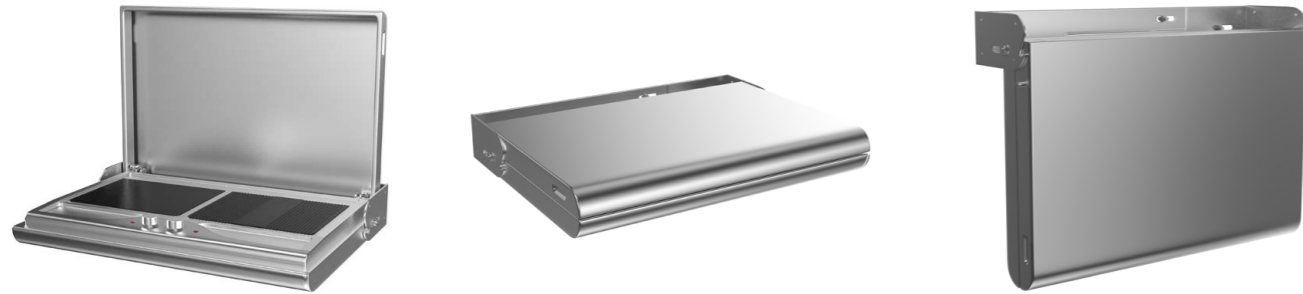


THE SMART BBQ FOR MODERN DAY LIVING

### Introducing the World's First Wall Mounted Electric BBQ

Featuring a sleek foldaway design, the Smart Wall Mount BBQ's world first design brings outdoor cooking to any space whilst providing a high quality cooking experience. The electrically powered cooktop is perfect for use on apartment balconies where gas powered models are often unsafe and illegal and space is at a premium.

The Smart Wall Mount BBQ is designed in Australia and made in Italy, constructed out of high grade stainless steel helping to make it the perfect outdoor cooking solution for the modern day home.



Product Code	WM700EW
Warranty	2 Years
Total Power	10 AMPS & 2300/2400W
Control Panel	Stainless Steel
Cooktop Surface	Ceramic Glass
Cooktop Surface Dimensions	(W) 13.2" x (D) 11"
Cooktop Surface Dimensions	(W) 335mm x (D) 280mm
Dimensions (Folded Away)	(W) 30.5" x (D) 5.9" x (H) 20.7"mm
Dimensions (Folded Away)	(W) 775mm x (D) 150mm x (H) 525mm
Dimensions (Cooking Mode)	(W) 30.5" x (D) 20.9" x (H) 20.7"mm
Dimensions (Cooking Mode)	(W) 775mm x (D) 530mm x (H) 525mm

#### ELECTRICALLY POWERED

The entire unit is electrically powered, meaning no more heavy and dangerous gas bottles which are considered unsafe and often illegal on inner city balconies and refined spaces.

#### TOP QUALITY DESIGN & CONSTRUCTION

Made from a dedicated boutique specialist manufacturer in Italy and designed in Australia. The whole unit is water resistant and tested to IPX4 standards.

#### FULLY ENCLOSED COVER

Fully enclosed stainless steel cover protects the cooking elements from weather damage and helps to provide a streamline, modern look to suit any outdoor setting.

#### DRIP SYSTEM FOR HEALTHY COOKING

Drip system channels unwanted fats and oils to the rear of the unit and into a detachable cup. This helps to provide healthier, tasty food to enjoy time and time again.

#### EASY TO INSTALL

Easy to install design, utilising a strong bracket that attaches directly to a wall.

#### COMPACT & SPACE SAVING FOLDAWAY DESIGN

The streamline design easily folds away against the wall when not in use. This helps to make it the ideal solution for today's style of living where space is at a premium.

#### TWO HIGH POWERED COOKING PLATES

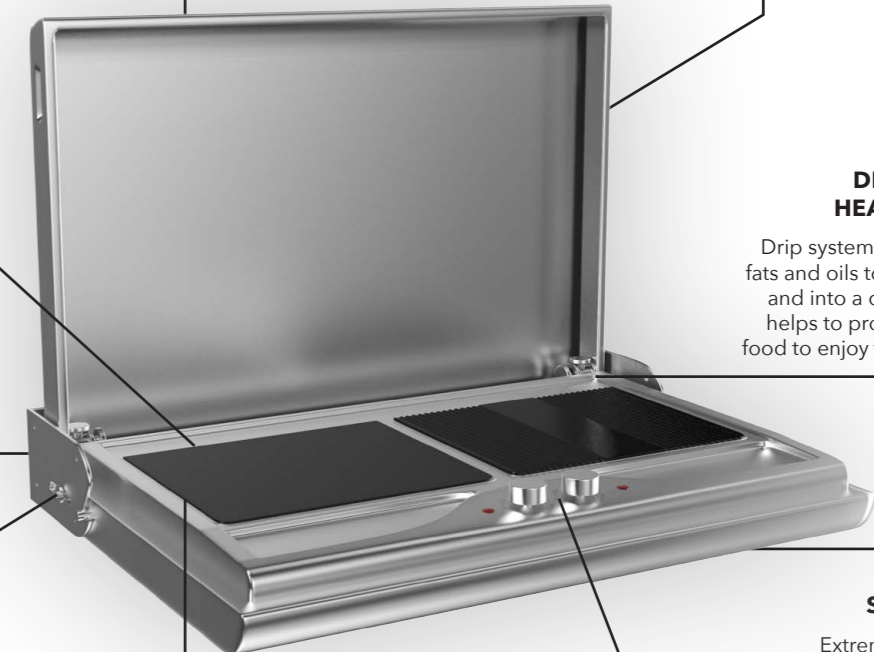
Easy to clean ceramic glass cooking plates (one flat plate and one grooved griddle plate) which run on separate 1400W zones with radiant heating elements and can be set to their own cooking temperature.

#### HIGH QUALITY STAINLESS STEEL

Extremely resistant to rust and is built to withstand years of usage within all climates.

#### STAINLESS STEEL CONTROL PANEL

High quality stainless steel control panel to allow complete control over the heat of the cooking surface. An indicator light for each cooker surface allows you to know when the BBQ is too hot to touch.





**ARISIT PTY LIMITED** (Australia)

ABN 23 091 515 294

40-44 Mark Anthony Drive  
Dandenong South VIC 3175

**P:** Sales: 1300 762 219

**F:** Sales & Service (03) 9768 0838

**E:** [arisit.sales@arisit.com](mailto:arisit.sales@arisit.com)

[www.arisit.com](http://www.arisit.com)

[www.arisitwarranties.com.au](http://www.arisitwarranties.com.au)

**[www.wallmountbbq.com](http://www.wallmountbbq.com)**

All efforts have been made to ensure that the information provided in this brochure is correct at the time of printing. Due to continuous product improvement and ongoing development, Husky reserves the right to make changes to the products and technical data without prior notice. Some products appearing in this brochure may be for illustrative purposes only. Diagrams are indicative measures only. Prior to commencing cabinetry cutouts the latest product sheets and operating and installation instructions accompanying the product must be referred to.